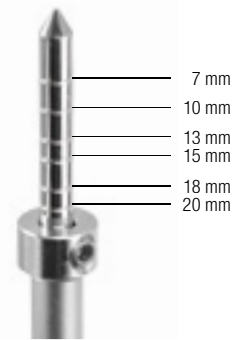
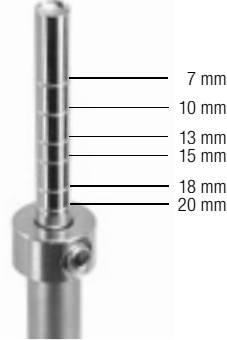
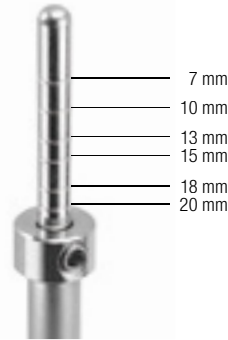


OSTEOTOMES, MEDOSS LINE

OSTEOTOMI, LINEA MEDOSS



1322/3 (mm 170)



Straight
Retto

- 1321/1** (ø 2,7 mm)
- 1321/2** (ø 3,2 mm)
- 1321/3** (ø 3,7 mm)
- 1321/4** (ø 4,2 mm)
- 1321/5** (ø 5,0 mm)

Convex
Convesso

- 1322/1** (ø 2,7 mm)
- 1322/2** (ø 3,2 mm)
- 1322/3** (ø 3,7 mm)
- 1322/4** (ø 4,2 mm)
- 1322/5** (ø 5,0 mm)

Concave
Concavo

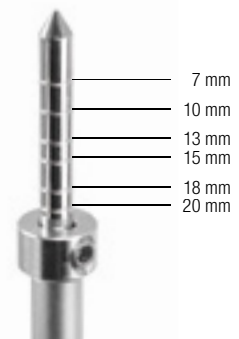
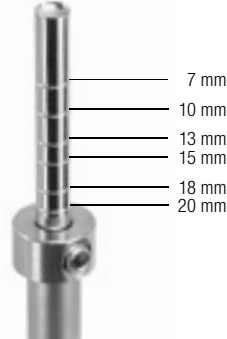
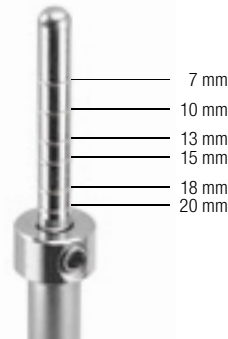
- 1323/1** (ø 2,7 mm)
- 1323/2** (ø 3,2 mm)
- 1323/3** (ø 3,7 mm)
- 1323/4** (ø 4,2 mm)
- 1323/5** (ø 5,0 mm)

Pointed
A punta

- **Grey** / Argento – ø 2,7 mm
- **Blue** / Azzurro – ø 3,2 mm
- **Yellow** / Giallo – ø 3,7 mm
- **Orange** / Arancio – ø 4,2 mm
- **Red** / Rosso – ø 5,0 mm



1322/8 (mm 165)



Bayonet
Baionetta

- 1321/6** (ø 2,7 mm)
- 1321/7** (ø 3,2 mm)
- 1321/8** (ø 3,7 mm)
- 1321/9** (ø 4,2 mm)
- 1321/10** (ø 5,0 mm)

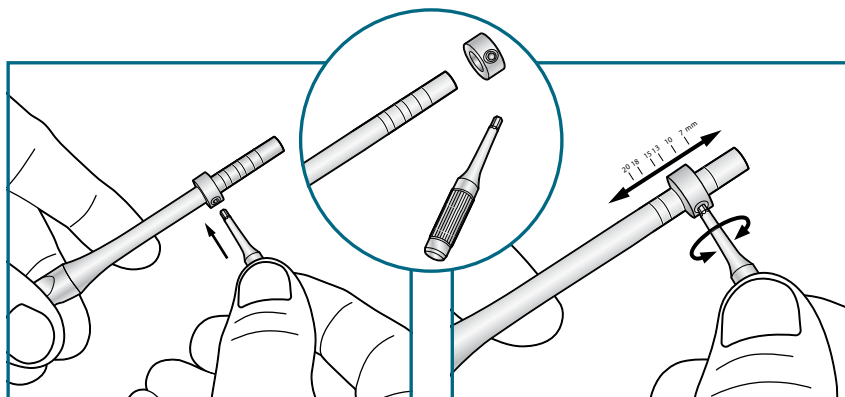
Convex
Convesso

- 1322/6** (ø 2,7 mm)
- 1322/7** (ø 3,2 mm)
- 1322/8** (ø 3,7 mm)
- 1322/9** (ø 4,2 mm)
- 1322/10** (ø 5,0 mm)

Concave
Concavo

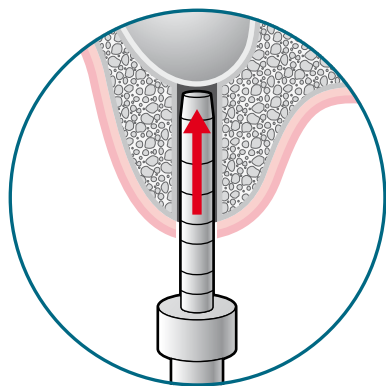
- 1323/6** (ø 2,7 mm)
- 1323/7** (ø 3,2 mm)
- 1323/8** (ø 3,7 mm)
- 1323/9** (ø 4,2 mm)
- 1323/10** (ø 5,0 mm)

Pointed
A punta

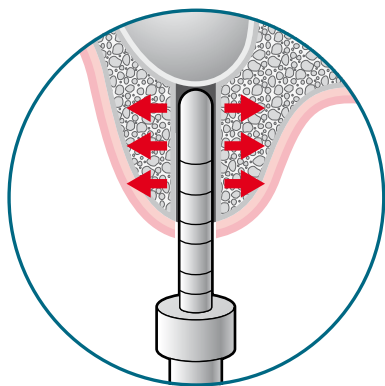


New MEDOSS osteotomes, equipped with a practical and easy blocking device extremely compact if compared to the traditional system thus ensuring a larger visual and operative field. The supplied screwdriver operates the locking and unlocking on the osteotome stopping device.

Nuovi osteotomi MEDOSS, progettati con un semplice e pratico sistema di bloccaggio: tale sistema è estremamente compatto se confrontato con il sistema tradizionale, aumentando il campo visivo ed operativo. Il cacciavite fornito in dotazione serve a bloccare e sbloccare il sistema di stop dell'osteotomo.



SINUS ELEVATION



SINUS CONDENSING

1322/KIT

Kit sinus elevation (internal)
Kit rialzo del seno mascellare

CONTENT

5 Osteotomes straight and
5 Osteotomes bayonet, concave

CONTENUTO

5 Osteotomi retti e 5 Osteotomi
a baionetta, concavi



1321/KIT

Kit sinus condensing
Kit osteotomi convessi

CONTENT

5 Osteotomes straight and
5 Osteotomes bayonet, convex

CONTENUTO

5 Osteotomi retti e 5 Osteotomi
a baionetta, convessi